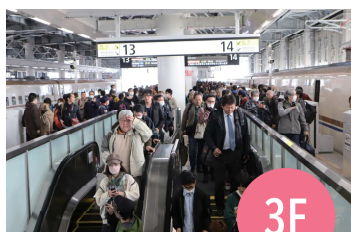




Discovering Tsuruga!

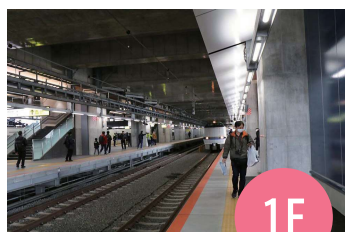
TSURUGA CITY GUIDE 2024



▲ Shinkansen platform



▲ Transfer concourse



▲ Conventional limited express platform

Tsuruga Station
The largest station
on the Hokuriku
Shinkansen line!

- Station building height
37 m
- Concourse length
200 m
- Number of Shinkansen
transfer ticket gates 19

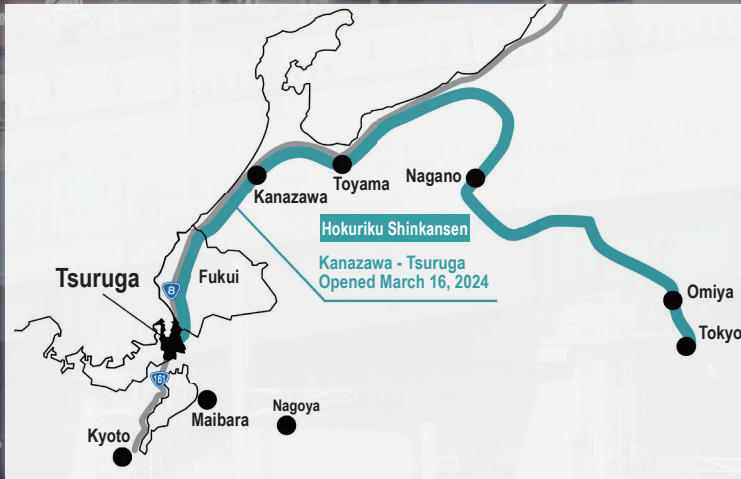
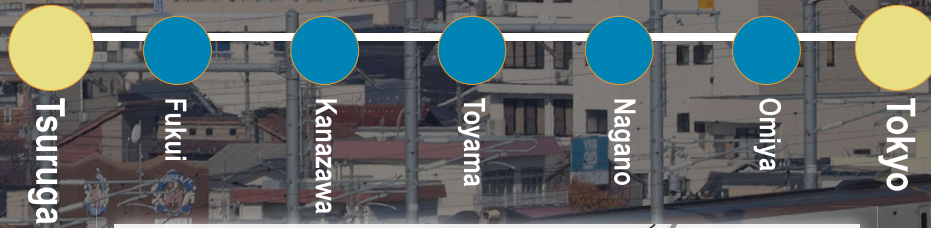
The design of the station expresses the shimmering waves
of Tsuruga Bay and the abundant nature of Tsuruga



Tsuruga Station: The first and last stop
Floating in the sky – A station overlooking
the harbor, surrounded by nature –

For almost half a century, the Hokuriku Shinkansen line extension connecting Kanazawa and Tsuruga has been a long-cherished dream. With the expansion opening, Tsuruga City has been working on urban development in order to take a giant leap forward as a major hub for exchange.

Tsuruga — Tokyo 3 hours, 8 minutes



Progress to the Opening of Hokuriku Shinkansen Tsuruga



1972 Decided upon the basic plan (June 1972)
Hokuriku Shinkansen to Stop at Tsuruga Station
Alliance established (September 1972) (1)



2005 Application for approval of construction implementation plan between Nan-etsu and Tsuruga (December 2005)

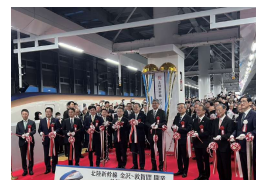
2012 Approval of construction implementation plan (full specifications) between Kanazawa and Tsuruga (June 2012)



2020 Hokuriku Shinkansen Shin-hokuriku Tunnel opens (July 2020) (2)
Opening of extension to the Hokuriku Shinkansen line between Kanazawa and Tsuruga is decided to postpone by one year

2023 Hokuriku Shinkansen rail connection ceremony (May 2023)
Hokuriku Shinkansen rail yard tour (July 2023), Tsuruga Station building tour (August 2023)
Welcoming ceremony for the Hokuriku Shinkansen Series W7 test train (October 2023) (3)

2024 Hokuriku Shinkansen
Kanazawa-Tsuruga line opens
(March 16, 2024)



Hokuriku Shinkansen Tsuruga Opens

Tsuruga: A City that Has Prospered on Its Railway and Port

—— Scheduled Services from Port of Tsuruga ——



A domestic ferry ride connecting Tsuruga and Hokkaido



A domestic roll-on /roll-off(RORO)ship ride connecting Hokkaido and Kyusyu via Tsuruga



An international container RORO ship ride connecting Tsuruga and Busan,South Korea



Having a good natural port,Tsuruga has prospered as a trading post connecting Japan and Asian continent from old times.

Including *Kitamaebune* ships,which sailed between Hokkaido and Tsuruga,many ships called at Port of Tsuruga during the Edo period(1603-1867),filling the city with goods and merchants.This prosperity led to Tsuruga being called "the capital of Hokkoku region."

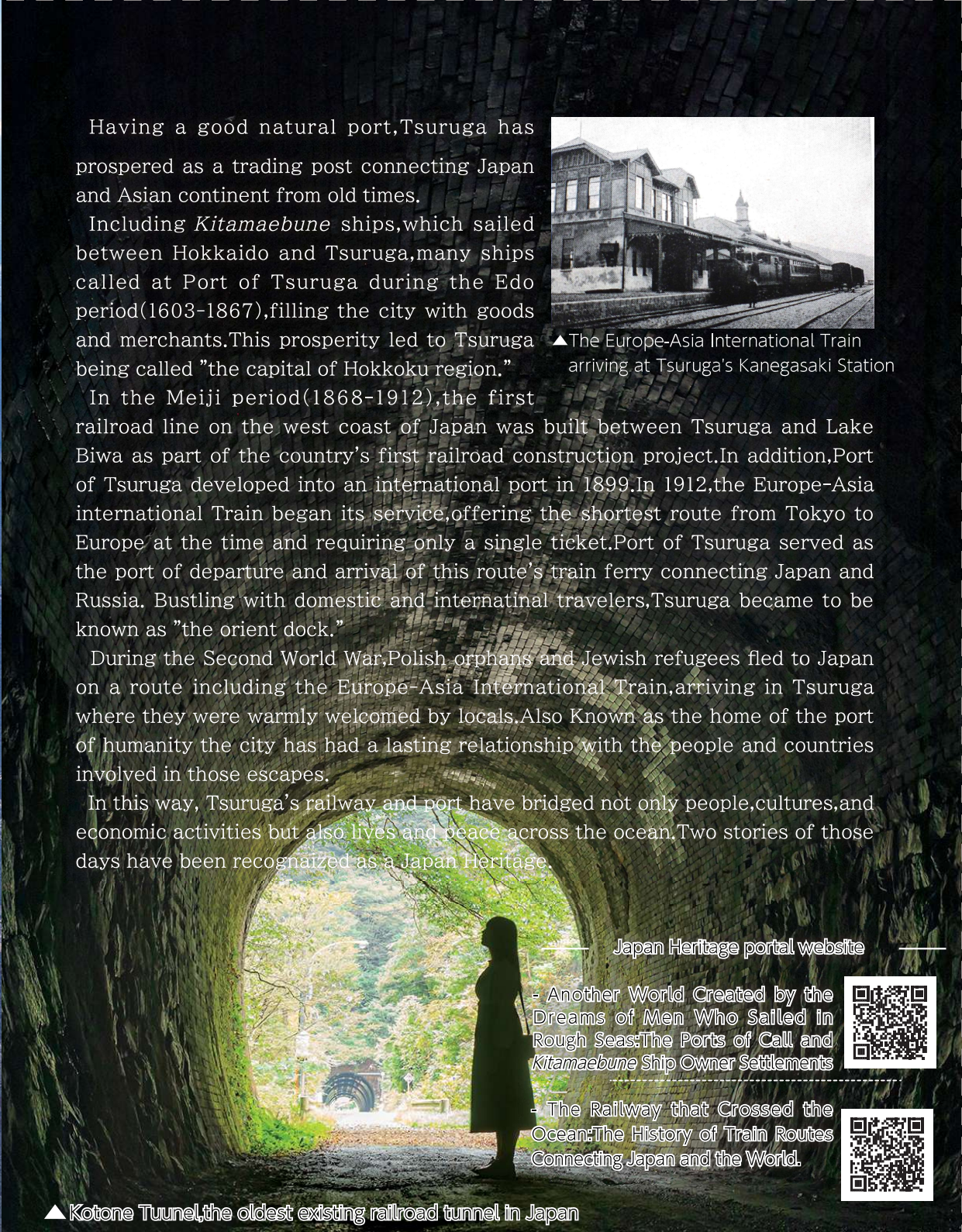
In the Meiji period(1868-1912),the first railroad line on the west coast of Japan was built between Tsuruga and Lake Biwa as part of the country's first railroad construction project.In addition,Port of Tsuruga developed into an international port in 1899.In 1912,the Europe-Asia international Train began its service,offering the shortest route from Tokyo to Europe at the time and requiring only a single ticket.Port of Tsuruga served as the port of departure and arrival of this route's train ferry connecting Japan and Russia. Bustling with domestic and internatinal travelers,Tsuruga became to be known as "the orient dock."

During the Second World War,Polish orphans and Jewish refugees fled to Japan on a route including the Europe-Asia International Train,arriving in Tsuruga where they were warmly welcomed by locals.Also Known as the home of the port of humanity the city has had a lasting relationship with the people and countries involved in those escapes.

In this way, Tsuruga's railway and port have bridged not only people,cultures,and economic activities but also lives and peace across the ocean.Two stories of those days have been recognaized as a Japan Heritage.



▲The Europe-Asia International Train arriving at Tsuruga's Kanegasaki Station



Japan Heritage portal website

- Another World Created by the Dreams of Men Who Sailed in Rough Seas:The Ports of Call and *Kitamaebune* Ship Owner Settlements



- The Railway that Crossed the Ocean:The History of Train Routes Connecting Japan and the World.

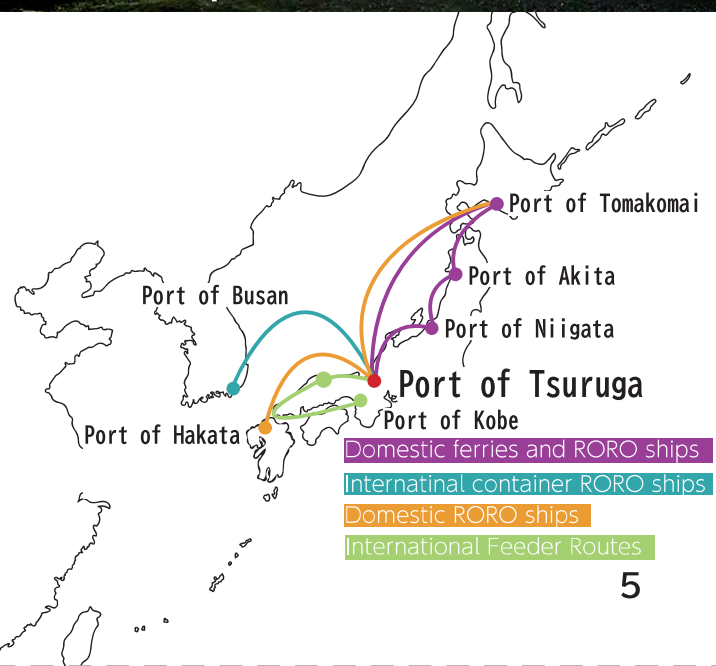


▲ Kotone Tunnel,the oldest existing railroad tunnel in Japan

Port of Tsuruga: Developing into a Modern Port

In addition to the scheduled services to and from Japan's main ports like Port of Tomakomai,Port of Hakata,and Port of Kobe,Port of Tsuruga also provides scheduled services to and from Port of Busan,South Korea.

Functioning as a backup for ports on Japan's east coast,the role of Port of Tsuruga will become increasingly important as the modal shift to marine transportation progresses in view of the shortage of drivers in the transportation industry and the need to reduce caebon emissions,



Tsuruga's Best Food!



▲Minato Tsuruga Tourism
Association website

The City's Specialties



(Producer's Voice)

The best things about Tsuruga red seabreams are their bouncy flesh and strong flavor. These branded fish are painstakingly raised, watching over each fish carefully. I hope you give them a try.



Tsuruga Red Seabream Aquaculturist

Mr. Hideki Nkamura

(Chairman, Tsuruga Saltwater
Aquaculture Association)

Tsuruga Red Seabream

Facing the Sea of Japan, the waters of Tsuruga Bay are rough during the winter and it often snows heavily in the area. As Tsuruga red seabreams are raised at a slow pace under these harsh conditions, their flesh is firm and springy. They also have strong vitality for withstanding sudden changes in water temperature. Providing a nutritious feed including crab shells results in high-quality flesh, good color, and just the right amount of fat. Whether you grill, boil, or eat them raw, Tsuruga red seabreams taste the best any way they're served.

Furusato Nozei (Hometown Tax) Donation Program

Furusato Nozei, Tsuruga City

Popular Gifts (2024) We send Tsuruga-unique gifts in return for the donations.



Large peeled shrimp



Pre-cut fresh
snow crab



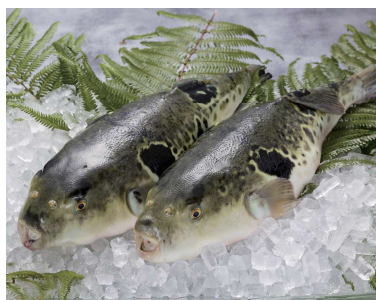
Seafood bowl
base





Shredded Kelp

Tsuruga is one of Japan's main producers of processed kelp, accounting for about 85% of the national production of manually shredded kelp. Shaved with a knife by specialists, Tsuruga's shredded kelp is like sheer silk.



Tsuruga Pufferfish

Japanese puffer raised in Tsuruga Bay are called Tsuruga pufferfish. As the water temperature of the bay is lower than that of other areas due to snow meltwater, their flesh is firm and packed with flavors. They can be served in a variety of ways, including raw, boiled, grilled, or deep-fried.

(Producer's Voice)

I hope you enjoy the elegant taste with outstanding flavors!



Higashiura Tangerine

Located in northeastern Tsuruga, the Higashiura district facing Tsuruga Bay has been a producer of a variety of tangerine called *unshu mikan* since the 19th century. Tangerines from this area feature a nostalgic taste with just the right sourness and a well-defined flavor.



Kelp shredding specialist

Mr. Akio Bessho

(Commended by the Minister of Health, Labour and Welfare as a Contemporary Master Craftsperson)



Energy Diversification Project

Tsuruga City was the first municipality in the Hokuriku region to be selected as a Leading Decarbonization Area by the Ministry of the Environment. We are working on generating a variety of energy sources including nuclear power, hydrogen energy, and renewable energies.



Nuclear Power

The city is home to nuclear power plants, which play an important role in achieving both stable electricity supply and carbon neutrality.



Hydrogen Energy

We are conducting various hydrogen demonstrations using hydrogen produced with electricity generated by renewable energies and nuclear power.



Renewable Energies

Solar power and other renewable energies generated in the city (which are no longer eligible for the national Feed-in Tariff program) are supplied to local public facilities.

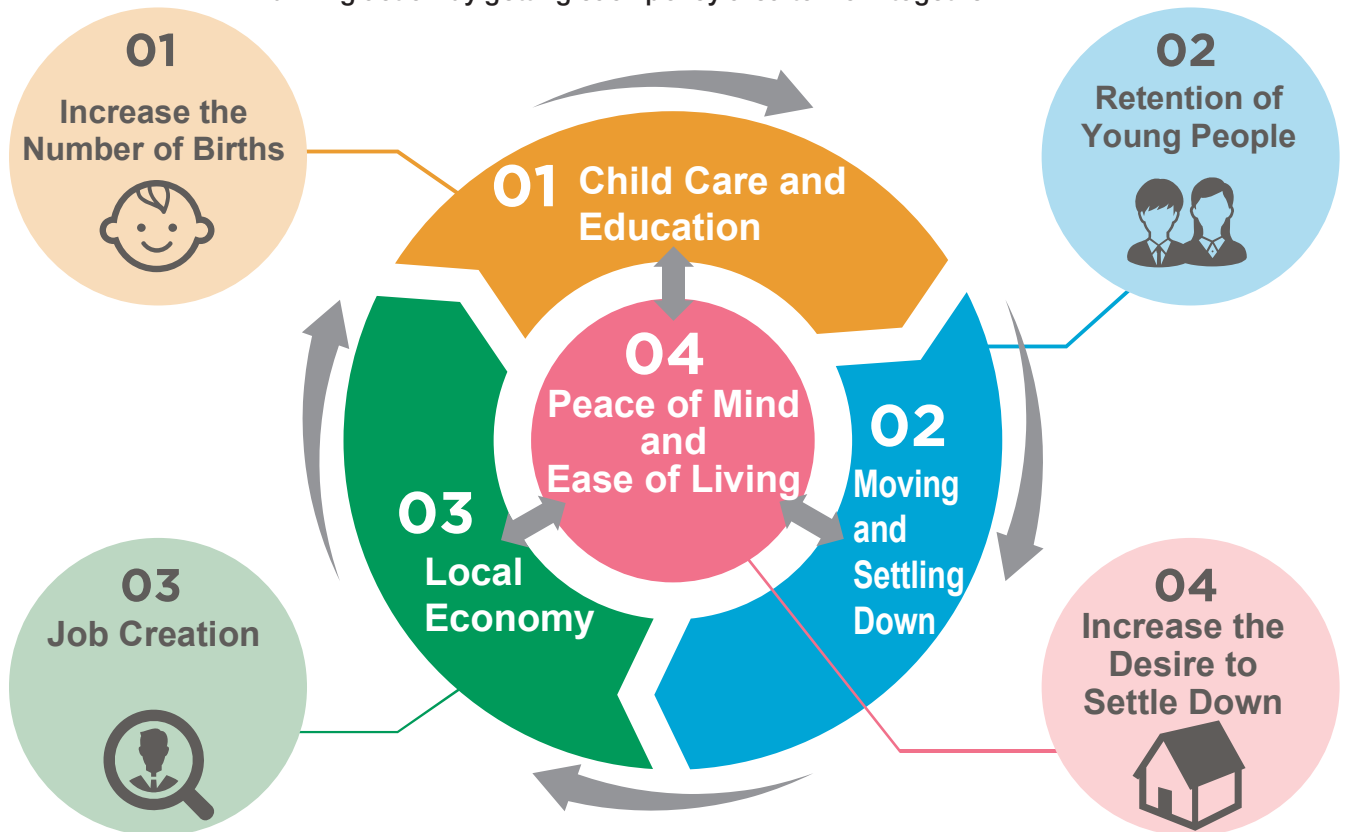
The New Comprehensive Plan

- The 8th Tsuruga City

Virtuous Circle Model – Planning System

The new Comprehensive plan has identified measures to reduce the population as an overarching political issue.

We are overhauling the previous model and driving action by getting each policy area to work together.



Life Stage



an to “Create a Virtuous Circle”

Comprehensive Plan -

The direction of each of the policy themes

01 Child Care and Education

- Create an environment conducive to childbearing and child rearing, including support for marriage and child rearing.
- Provide a quality educational environment that includes programming and English language instruction.

02 Moving and Settling Down

- Create an environment where children who will carry on the future of Tsuruga can continue to live in Tsuruga or want to move to/ move back to Tsuruga.



03 Local Economy

- Revitalize primary industries, manufacturing, commerce, and tourism, and create employment opportunities for the people of Tsuruga.



04 Peace of Mind and Ease of Living

- Create a pleasant and safe environment for everyone by implementing disaster prevention and mitigation, medical care, welfare, public transportation, recreational activities, and more.



Initiatives in line with the stages of life

Child Care and Education

■ Marriage support

In order to support as many people as possible who wish to get married, we support projects by private companies that create opportunities for people to meet and promote the use of the Fukukoi Matching System.



■ Digital human resources development project

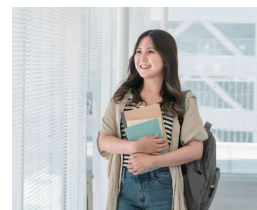
To develop human resources with the entrepreneurial spirit to create startups and the mindset to take on the challenges required by digital companies, we will implement a program for junior high and high school students to work on solving local problems and more through digital technology.



Moving and Settling Down

■ Hometown Scholarship Fund program

As a means of encouraging people to settle in the city, we have established the "Hometown Scholarship Program," which gives those who grew up in Tsuruga the opportunity to pursue higher education, and provides scholarship repayment assistance and other support for those who choose to live and work in Tsuruga in the future.



■ Support project to secure corporate human resources (Part of which is public-private partnership scholarship repayment assistance)

We will publicize the scholarship repayment support system, which will be implemented through public-private partnerships starting in fiscal 2025, for those who have been employed by companies in the city, and will recruit companies to participate in the system.

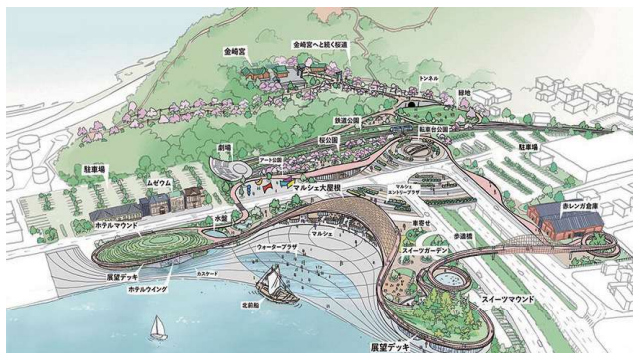


Local Economy

■ Kanegaski Area Attractiveness Development Project

We are acquiring project land to be developed with parks, parking lots, etc., in order to develop facilities that will create liveliness and excitement.

In conjunction with the construction of private facilities that will create a lively atmosphere, we will be carrying out design work and more, including workshops, to develop parks, parking lots, etc.



© OMA

Peace of Mind and Ease of Living

■ Project to secure human resources for care

In order to ensure a stable supply of care personnel, improve the quality of care services, and promote the retention of care personnel, we will implement various projects.



■ Urban Sports Facilities Development Study Project

We will consider the development of facilities where people can experience urban sports to enrich their leisure time and improve their health.



Tsuruga By The Numbers

As of Dec.19,2024



Population:
62,380



Households:
29,310

Tsuruga Station
(Shinkansen
Station Building)

The highest-
ever shinkansen
station

Height: **37** meters



No waiting list for daycare facilities!
A city that provides reliable parenting support.

Daycare
facilities:

21

Kindergartens:

2

Certified childcare
centers:

4



Elementary
schools:

11

Junior high
schools:

5

H i g h
schools:

3

Universities:

2

After-school
care facilities:

14

Taking care of elementary school students
whose parents are at work during the
daytime, after-school care facilities
support the students' daily lives and
provide fun activities to ensure their
sound development.

Toyo keizai Inc.'s
Liveability Ranking 2024

32th out of 812
cities and
wards



Thinking about moving to Tsuruga?

Relocation to Tsuruga promotion
website [KURAS TSURUGA]

Cargo tonnage handled
by Port of Tsuruga

Data of 2024

1,684 t/y

Ranking of ports on the
main island's west coast

No. **2**



J a p a n
Heritage: **2** stories

- Another World Created by the Dreams of Men Who Sailed in Rough Seas: The Ports of Call and Kitamaebune Ship Owner Settlements
- The Railway that Crossed the Ocean: The History of Train Routes Connecting Japan and the World

National cultural
properties

21

Prefecture-and city-
designated cultural
properties:

179

As of Oct.31,2024

One of Japan's three XX:

2

- One of Japan's three large wood torii: Kehi shrine
- One of Japan's three great pine groves :kehi Pine Grove

Amount of Furusato Nozei donation:Date
of 2024

Ranking
within Fukui: **No.1**

National
ranking: **No.16**

Number of private
businesses

2021 Economic Census
Activity Survey

Medical and
welfare services

Daily life services
& Entertainment

Services

3,184

Others

Wholesale & Retail

Accommodation
& Restaurants

Construction

Getting to Tsuruga

By Hokuriku Shinkansen

Tokyo 3 h 8 min. (Hokuriku Shinkansen Kagayaki or Hakutaka)

Nagano 1 h 49 min. (Hokuriku Shinkansen Kagayaki or Hakutaka)

Kanazawa 41 min. (Hokuriku Shinkansen Kagayaki or Tsurugi)

(Note) This is the fastest time required.

By Tokaido Shinkansen

Tokyo Approx. 3 hours. (Tokaido Shinkansen Hikari and express train Shirasagi)

By express trains

Nagoya Approx. 1 h 40 min. (Express train Shirasagi)

Osaka Approx. 1 h 20 min. (Express train Thunderbird)

Kyoto Approx. 50 min. (Express train Thunderbird)

By car

Kanazawa Approx. 1 h 30 min. (130km on Hokuriku Expressway)

Nagoya Approx. 1 h 30 min. (125km on Meishin Expressway and Hokuriku Expressway)

Osaka Approx. 2 hours. (160km on Meishin Expressway and Hokuriku Expressway)

By ferry

Hokkaido Approx. 20h 35min.

