

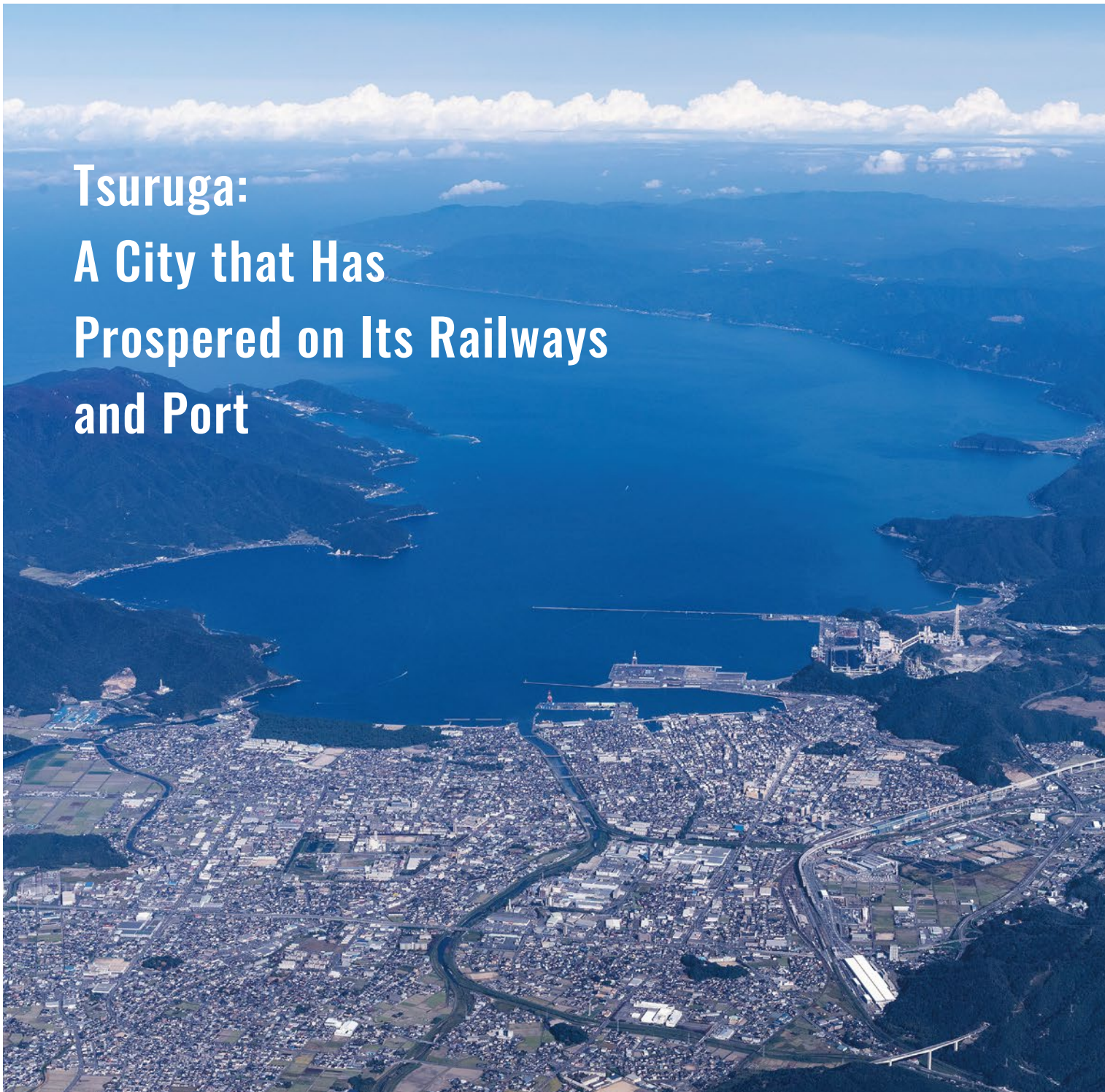


Discovering Tsuruga!

TSURUGA CITY GUIDE 2025



Tsuruga: A City that Has Prospered on Its Railways and Port



Port of Tsuruga: Developing into a Modern Port

In addition to the scheduled services to and from Japan's main ports like Port of Tomakomai, Port of Hakata, and Port of Kobe, Port of Tsuruga also provides scheduled services to and from Port of Busan, South Korea.

Functioning as a backup for ports on Japan's east coast, the role of Port of Tsuruga will become increasingly important as the modal shift to marine transportation progresses in view of the shortage of drivers in the transportation industry and the need to reduce carbon emissions,





“The City of Railways and Ports”

Tsuruga flourished since ancient times through trade with the continent. During the Warring States period, Yoshitsugu Otani developed the port, establishing it as a key transportation hub on the Sea of Japan coast.

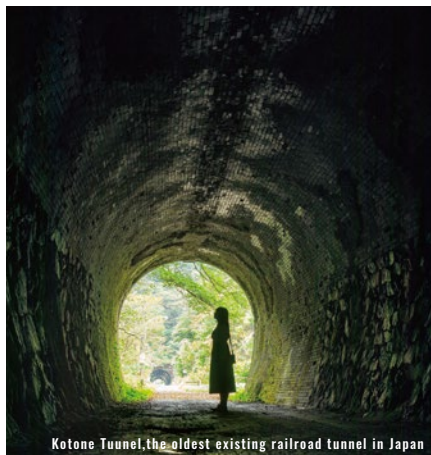
In the Edo period, it connected to various regions as a port of call for Kitamaebune ships, prospering to the extent it was called the “Capital of the North.” Goods like herring and kelp were transported in from Hokkaido.

Entering the Meiji era, Japan’s first railway on the Sea of Japan coast opened here. Tsuruga became a vital junction of rail and port, achieving further leaps forward. The port shifted its focus from domestic to international trade, and the direct “Eurasian International Express” train linking Tokyo and Europe commenced service. Bustling with domestic and international travelers, Tsuruga was hailed as the “Eastern Wharf.”

“Port of Humanity”

Tsuruga Port, which developed as an international port, issued visas to Polish orphans who had lost their families in Siberia during the turmoil of the Russian Revolution in the 1920s, and Jewish refugees who landed in the 1940s carrying the “life-saving visas” issued by Vice-Consul Chiune Sugihara in Kaunas, Lithuania, to escape persecution by Nazi Germany and others. It is the only port in Japan where this occurred, and because the people of the town warmly welcomed them at the time, it is also called the “Port of Humanity.”

In this way, Tsuruga’s railways and port became bridges not only for people, culture, and economy, but also for lives and peace across the seas. This story from that era has been designated as a Japan Heritage site.



Japan Heritage portal

- Another World Created by the Dreams of Men Who Sailed in Rough Seas: The Ports of Call and Kitamaebune Ship Owner Settlements



- The Railway that Crossed the Ocean: The History of Train Routes Connecting Japan and the World.



TSURUGA POLT SQUARE otta

With the opening of the Hokuriku Shinkansen Tsuruga Station in 2024, Tsuruga will become a starting point for trains bound for Kanazawa, Tokyo, the Kansai region, and the Chukyo region, as well as a terminus. A new facility befitting this gateway to Tsuruga has now been born.

Spanning Tsuruga’s gateway is TSURUGA POLT SQUARE “otta”. Designed to be a hub where people gather and thrive, it features a hotel, restaurants, and educational/enrichment facilities. At its center lies the Station West Plaza Park with its lawn, a popular community spot.



The City's Specialties



Tsuruga Red Seabream

Facing the Sea of Japan, the waters of Tsuruga Bay are rough during the winter and it often snows heavily in the area. As Tsuruga red seabreams are raised at a slow pace under these harsh conditions, their flesh is firm and springy. They also have strong vitality for withstanding sudden changes in water temperature. Providing a nutritious feed including crab shells results in high-quality flesh, good color, and just the right amount of fat. Whether you grill, boil, or eat them raw, Tsuruga red seabreams taste the best any way they're served.

Producer's Voice

Each fish boasts firm, resilient flesh and a rich, deep flavor. We invite you to savor our brand-name fish, the Tsuruga Red Sea Bream, raised with meticulous care and attention to every single fish.

Tsuruga Red Seabream Aquaculturist
Mr. Hideki Nkamura
(Chairman, Tsuruga Saltwater Aquaculture Association)



Tsuruga Pufferfish

Japanese puffer raised in Tsuruga Bay are called Tsuruga pufferfish. As the water temperature of the bay is lower than that of other areas due to snow meltwater, their flesh is firm and packed with flavors. They can be served in a variety of ways, including raw, boiled, grilled, or deep-fried.



Shredded Kelp

Tsuruga is one of Japan's main producers of processed kelp, accounting for about 85% of the national production of manually shredded kelp. Shaved with a knife by specialists, Tsuruga's shredded kelp is like sheer silk.

Producer's Voice I hope you enjoy the elegant taste with outstanding flavor.

Mr. Akio Bessho
(Commended by the Minister of Health, Labour and Welfare as a Contemporary Master Craftsperson)



Higashiura Tangerine

Located in northeastern Tsuruga, the Higashiura district facing Tsuruga Bay has been a producer of a variety of tangerine called unshu mikan since the 19th century. Tangerines from this area feature a nostalgic taste with just the right sourness and a well-defined flavor.



Echizen Crab

The king of winter delicacies, Echizen crab. Boiled, in hot pot, grilled, or raw—whichever way you enjoy it, its satisfying texture is unmatched.



Tsuruga Ramen

Originating from food stalls, Tsuruga ramen features a base of pork bone and chicken broth. Each shop offers its own signature ramen.



Sauce Katsu Don

A hearty bowl of sauce katsu don featuring tonkatsu fried in our special breadcrumbs and drenched in our secret sauce. You're sure to be completely satisfied.



Seafood Bowl

Our seafood bowl, generously topped with freshly caught fish, is truly exquisite. We invite you to savor the bounty of the sea from the port town of Tsuruga.



Furusato Nozei (Hometown Tax) Donation Program

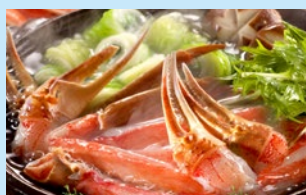
Popular Gifts (2024) We send Tsuruga-unique gifts in return for the donations.

Furusato Nozei, Tsuruga City

Large peeled shrimp



Pre-cut fresh snow crab



Seafood bowl base





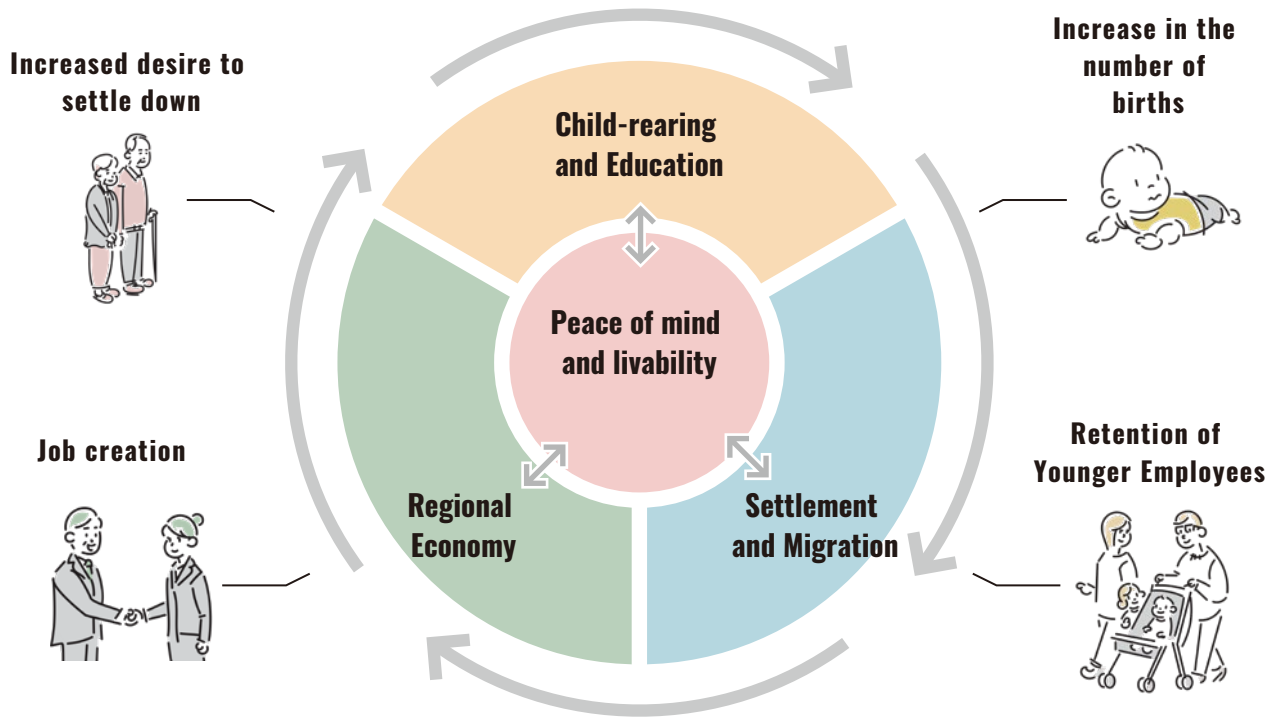
A New Comprehensive Plan

— The 8th Tsuruga City Co

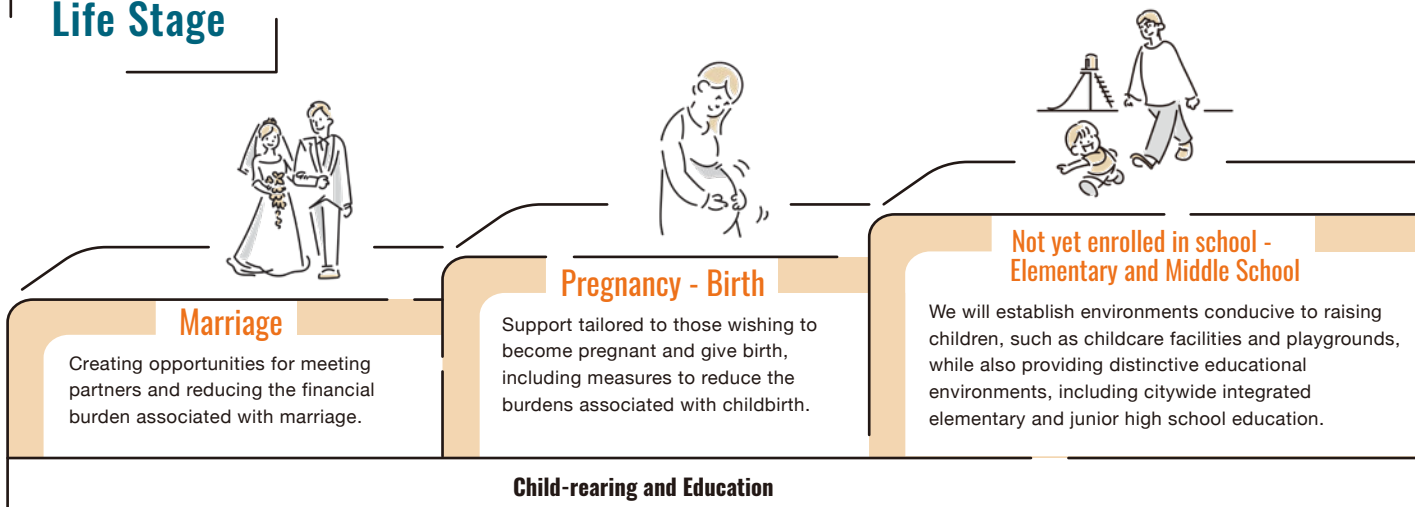
Positive Cycle Model-Planning Framework

The new comprehensive plan identifies “population decline” as an overarching policy challenge.

We will overhaul the existing model and advance countermeasures through coordinated efforts across policy areas, guided by a shared narrative.



Life Stage



to Create a Positive Cycle Comprehensive Plan —

Direction of Each Policy Theme

Child-rearing and Education

- Creating an environment conducive to childbirth and child-rearing, including marriage support and childcare assistance.
- Providing a high-quality educational environment, including programming and English education

Settlement and Migration

- Creating an environment where children who will shape Tsuruga's future can continue to live in Tsuruga, and an environment that attracts people to relocate to Tsuruga.



Regional Economy

- Revitalize primary industries, manufacturing, and commerce/tourism to create opportunities for residents in Tsuruga.



Peace of mind and livability

- Enhancing disaster prevention and mitigation, healthcare, welfare, public transportation, and other services, while also promoting sports and cultural activities, to create an environment where everyone can live happily and with peace of mind.



High school - University

Strengthen the city's educational environment while expanding scholarship programs and other support systems.

Finding employment

Attracting businesses, commercializing primary industries, and realizing profitable tourism to create jobs

settlement

Enhancing disaster prevention, medical care, welfare, public transportation, and revitalizing sports and cultural activities

Settlement and Migration

Regional Economy

Peace of mind and livability

Initiatives in line with the stages of life

Child-rearing and Education

▶ Marriage Support

To support as many individuals as possible who wish to marry, we are implementing initiatives such as supporting private sector projects that create opportunities for meeting potential partners and promoting the use of the Fukukoi Matching System.



▶ Digital Talent Development Initiative

To cultivate talent capable of thriving in the digital society, we are implementing Tsuruga City's unique step-up digital education program tailored to children's age groups. This includes foundational programming classes for elementary school students and more practical problem-solving programs utilizing generative AI for junior high and high school students. We are advancing efforts to create an environment where all children can acquire digital literacy.



Settlement and Migration

▶ Hometown Scholarship Program

To encourage young people to settle or relocate here, we will implement three programs: - A municipal scholarship loan program providing loans to those facing financial hardship - Scholarship loan repayment support in partnership with financial institutions, available regardless of household income - Scholarship repayment support in partnership with local companies, available even to those not originally from the city or who did not plan to return when pursuing higher education.



▶ Project to Create a Connected Population

We will target young people interested in connecting with rural areas by offering a program that enables short-term trial relocation, providing opportunities for work experience with local companies and participation in community events, thereby working to create a connected population for our city.



Regional Economy

▶ Kanegasaki Area Attraction Development Project

We will explore utilizing the abandoned railway right-of-way to develop vibrant facilities, parks, and parking lots through private-sector involvement in the Kanegasaki area, while also enhancing accessibility around the station, Kehi Shrine, and the port.



▶ Kehi-no-Mori Concept

Kehi-no-Mori Development Concept Promotion Project To further enhance the appeal of the entire Kehijingu Shrine area and foster new human connections and local communities, we will promote the development of a complex facility centered on education and culture, along with the cultivation of lush, green woodlands.



Peace of mind and livability

▶ Project to secure human resources for care

To ensure the stable supply of care workers and improve the quality of care services, while supporting retention efforts, we will implement various initiatives to secure care personnel.



▶ Urban Sports Facility Development Project

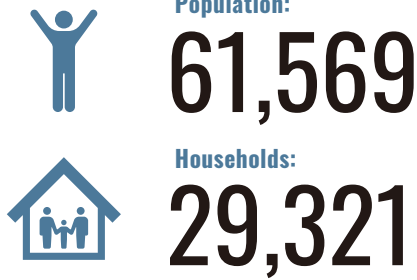
We will develop facilities where people can experience urban sports to enrich leisure time and promote health.



What Is Tsuruga Like?

Tsuruga By The Numbers

As of January 31, 2026



A city proud of having zero children on waiting lists for childcare, where parents can raise children with peace of mind

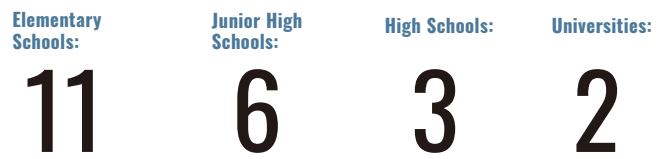


Tsuruga Station (Shinkansen Station Building)

Height: 37 meters



Preparing for the Largest-Scale Shinkansen Project in History



After-School Clubs:

14 locations

After-school clubs provide care for elementary school children whose parents are not at home during the day due to factors such as both parents working. They support the children's play and daily lives, fostering their healthy development.

Toyo Keizai Inc. Livability Ranking 2025
32th out of 812 cities and wards

37th out of 812 cities



For those considering moving to Tsuruga City!

KURAS TSURUGA:
Official Website for Promoting Relocation and Settlement

Cargo Volume Handled at Tsuruga Port Data of 2024



Annual: 1,841 million tons

Ranked 2nd on Honshu's Sea of Japan coast

Japan Heritage: 2 stories

- A Dream-Spun Realm Beyond the Rough Seas: -Kitamae Ship Ports and Shipowners' Settlements-
- Railways Across the Seas -The Miracle of Railways Connecting to the World-

As of December 2025

National Designated Cultural Properties: 21

Prefectural and Municipal Designated Cultural Properties: 178

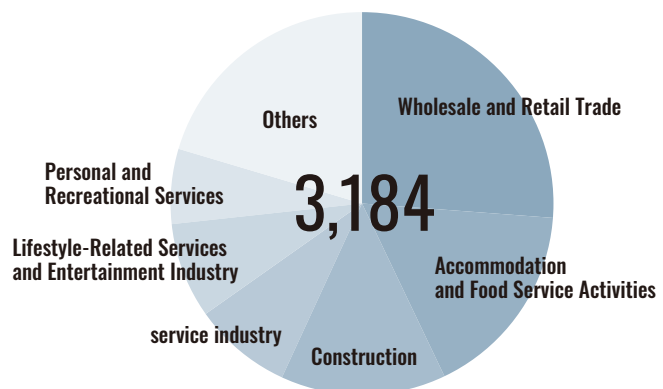
Japan's Three Great ○○ **2**

- Japan's Three Great Wooden Torii Gates: "Kehi Shrine"
- Japan's Three Great Pine Forests: "Kehi Pine Grove"

Hometown Tax Donation Amount: Data of 2024 Results

Ranking within Fukui no.1 National ranking no.15

Number of Business Establishments (Private Sector) 2021 Economic Census Activity Survey





Hokuriku Shinkansen Tsuruga Opens

The long-awaited Hokuriku Shinkansen line between Kanazawa and Tsuruga Station, a half-century aspiration for Tsuruga City, has opened.

Aiming for a leap forward as an exchange hub, Tsuruga City is now working on post-opening urban development.



Tsuruga – Tokyo: **3** hours **6** minutes



First and last stop: Tsuruga Station

The largest station on the Hokuriku Shinkansen Tsuruga Line!

- Station building height: **37** m
- Concourse length: **200** m
- Number of transfer ticket gates: **19**



Local Line Limited Express Platform (1F)



Transfer Concourse (2F)



Shinkansen Platform (3F)



Port of Humanity Tsuruga Museum

This museum introduces historical facts such as Polish orphans who lost their families in Siberia due to upheavals like the Russian Revolution, and Jewish refugees who crossed the sea and landed at Tsuruga Port carrying Japanese transit visas (“visas for life”) issued by Consul-General Chiune Sugihara in Kaunas, Lithuania. Through exhibitions combining video and historical materials, it clearly presents the history and stories of Tsuruga as a “Port of Humanity” that welcomed them, making it accessible to a wide range of generations.



Opening Hours: 9:00 AM to 5:00 PM (Last admission at 4:30 PM)
 Closed Days:
 Wednesday (If Wednesday is a national holiday, closed the following day) • Year-end and New Year holidays
 Admission: Adults 500 yen (400 yen for groups), Elementary school students and younger 300 yen (240 yen for groups) *Free for children under 4 years old
 Address: 23-1 Kanegasaki-cho, Tsuruga City
 Phone: 0770-37-1035

Access

By Hokuriku Shinkansen

Tokyo: 3 hours 6 minutes (Hokuriku Shinkansen Kagayaki, Hakutaka)
Nagano: 1 hour 47 minutes (Hokuriku Shinkansen Kagayaki, Hakutaka)
Kanazawa: 40 minutes (Hokuriku Shinkansen Kagayaki, Tsurugi)
(Note) The above represents the fastest possible travel time.

By Tokaido Shinkansen

Tokyo: Approx. 3 hours (Tokaido Shinkansen Hikari — Limited Express Shirasagi)

By express trains

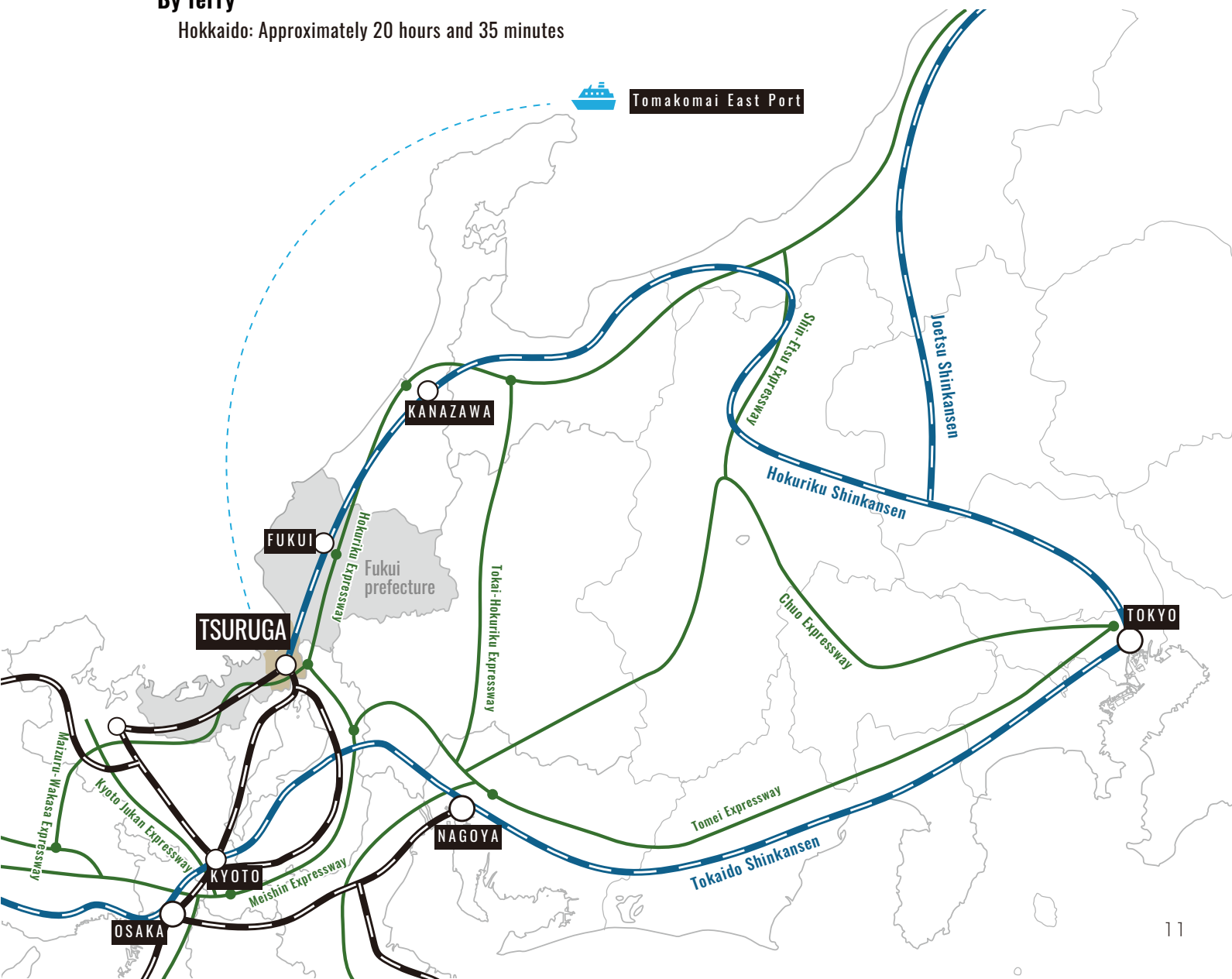
Nagoya: Approx. 1 hour 40 minutes (Limited Express Shirasagi)
Osaka: Approx. 1 hour 20 minutes (Limited Express Thunderbird)
Kyoto: Approx. 55 minutes (Limited Express Thunderbird)

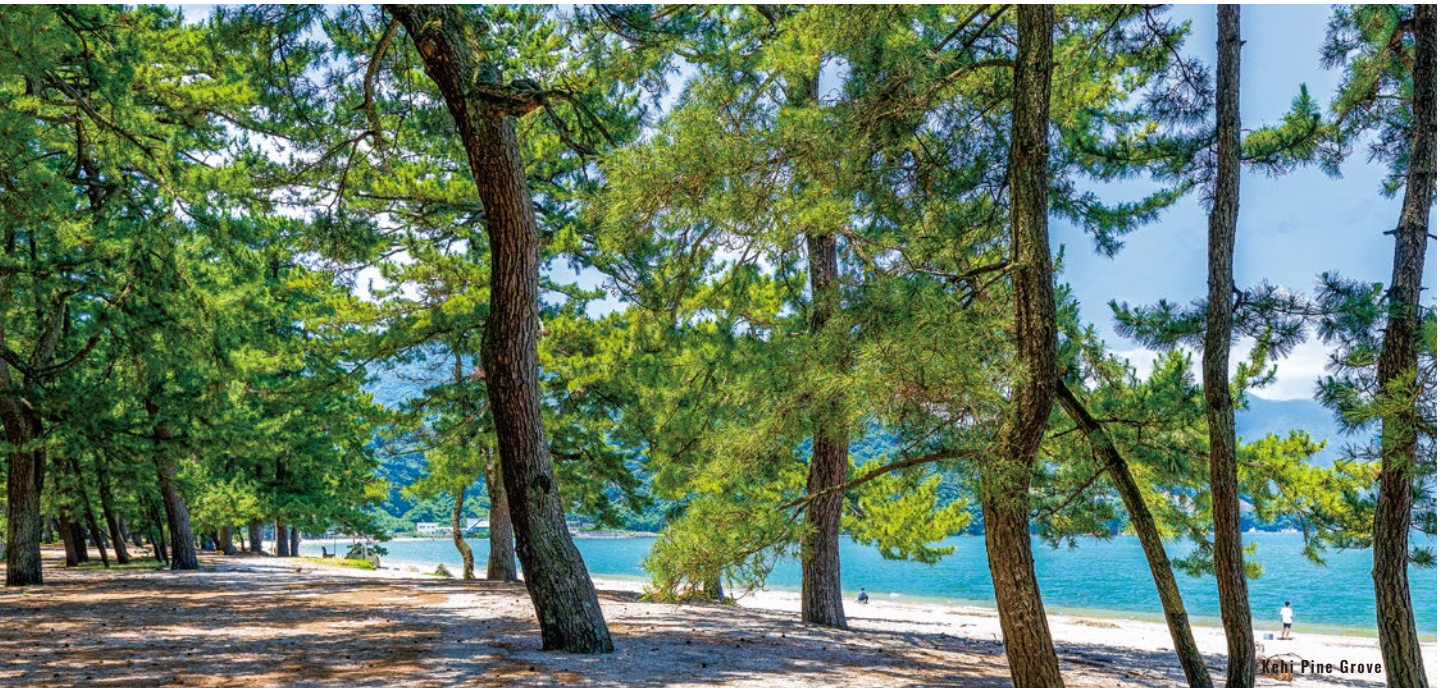
By Car

Kanazawa: Approx. 1 hour 30 min (Hokuriku Expressway 130 km)
Nagoya: Approx. 1 hour 30 min (Hokuriku Expressway — Meishin Expressway 125 km)
Osaka: Approx. 2 hours (Hokuriku Expressway — Meishin Expressway 160 km)

By ferry

Hokkaido: Approximately 20 hours and 35 minutes





Discovering Tsuruga! TSURUGA CITY GUIDE 2025

Published in March 2026

2-1-1 Chuo-cho, Tsuruga City, Fukui Prefecture, Japan 914-8501 Tel. +81-0770-22-8112 (Public Relations and Public Hearing Division)



Tsuruga City